



Plot 5, Catherine Mead Mews Catherine Mead Street, Bedminster, Bristol, BS3

1st
£335,000

Hollis Morgan - A range of three storey townhouses situated in the heart of Bedminster. Contact us now to register your interest.

- New Home
- Town House
- Private Rear Gardens
- Nearing Completion
- Underfloor Heating
- En Suite Shower Room
- Highly Energy Efficient

A choice of 6 Freehold townhouses arranged over three levels, with the ground floor offering front to back “open plan style” living accommodation complete with stylishly appointed contemporary kitchens and access to private enclosed lawned gardens. The master bedroom is located on first floor with a tiled en suite shower room and spacious family bathroom. A further bedroom and study are situated on the top floor. The external finish of each property are both aesthetically attractive and carefully constructed to ensure low heat loss and energy waste.

The development is located yards from the vibrant North Street within the popular suburb of Bedminster. North Street offers an array of independent retailers, gourmet restaurants, affluent bars, cafes and friendly public houses. Bristol City Centre, The Harbourside and Temple Mead train station are within walking distance.

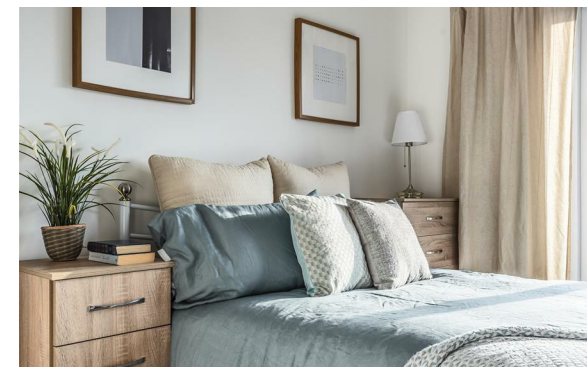
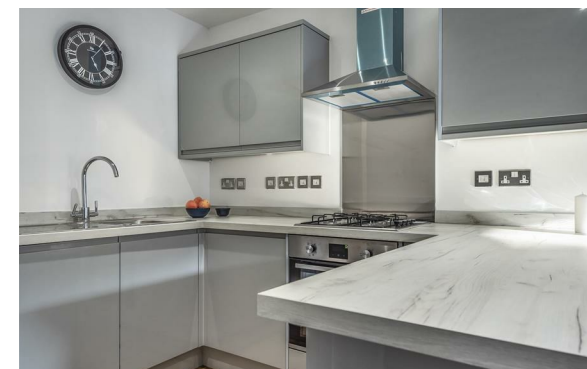
Tenure
Freehold.

Please Note

We endeavour to make our sales details accurate and reliable but they should not be relied on as statements or representations of fact and they do not constitute any part of an offer or contract. The seller does not make any representation or give any warranty in relation to the property and we have no authority to do so on behalf of the seller.

Please Note

We endeavour to make our sales details accurate and reliable but they should not be relied on as statements or representations of fact and they do not constitute any part of an offer or contract. The seller does not make any representation or give any warranty in relation to the property and we have no authority to do so on behalf of the seller.



hollis
morgan
